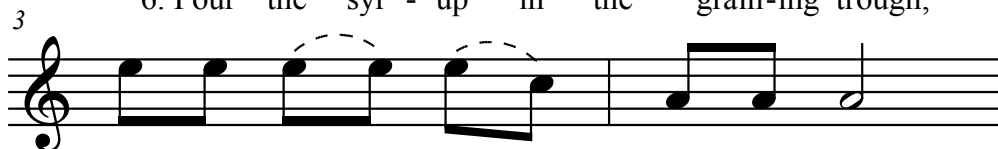


Making Maple Sugar

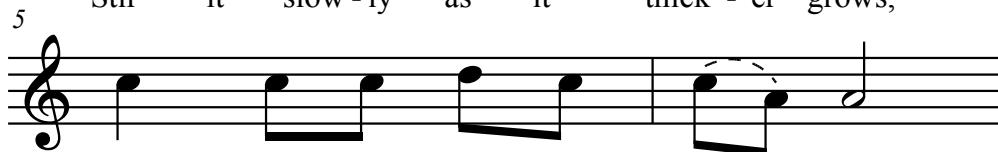
Chippewa Indian Melody



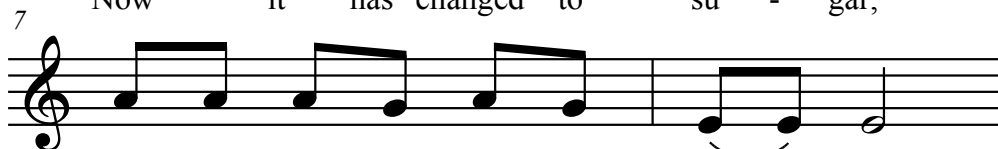
1. Let us go _____ to the su - gar camp,
2. Make a fire _____ in the su - gar lodge,
3. Cut a notch _____ in the ma - ple tree,
4. In the snow _____ see the rab - bit tracks,
5. Bring the sap _____ from the ma - ple trees,
6. Pour the syr - up in the grain - ing trough,



While the snow _____ lies _____ on the ground,
So that we _____ may _____ boil the sap,
Set a pail _____ on the ground be - low,
Hear the note _____ of the chick - a - dee,
Pour the sap _____ in the i - ron pot,
Stir it slow - ly as it thick - er grows,



Live in a birch - bark wig - wam,
Bring all the wood - en la - dles,
Soon will the sap be flow - ing,
We must not stop to fol - low them,
See how it steams and bub - bles,
Now it has changed to su - gar,



All the chil - dren and the old - er folk,
Set the wood - en trough for grain - ing,
From the tree it will be flow - ing,
It's the sea - son of the su - gar camp,
May we have a lit - tle taste of it?
We may eat it in a birch - bark dish,



All the peo - ple are at work.
All the peo - ple are at work.
All the peo - ple are at work.
All the peo - ple are at work.
All the peo - ple are at work.
There is su - gar for us all.